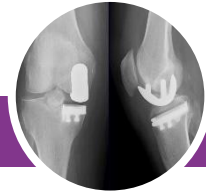


Partial Knee Replacement

Information for Patients



This leaflet has been written to give you the right information about knee replacement surgery and what you can do to help with your recovery.

The following information and advice have been written in line with the physiotherapy and surgical teams at James Paget University Hospital.

If you have had your surgery at another hospital or you were given specific instructions that are different to the information below, you should consult your surgeon or physiotherapist before undertaking any of the exercises/advice.

What is a partial knee replacement?

A half or partial knee replacement is a major operation that involves replacing one half of your knee joint with an artificial joint, normally the inside half.

What are the common symptoms?

Pain: A partial knee replacement is a big operation and will be painful. The pain from your operation is likely to be with you for some time, possibly weeks or months, but this is normal and to be expected.

Swelling: After your operation your knee will be swollen. The swelling will often hang around for some time, maybe weeks into months. However, just because the swelling is still there, doesn't mean there's a problem - it is quite normal and to be expected.

What can I do to help myself?

Be kind to yourself: You have just had a major joint operation which is the largest thing you can ask your knee to undergo. Your body is amazing and can sort most issues out by itself, but the pain and difficulties can make you feel vulnerable, drained and sometimes a bit lost. Adapting and adjusting things that are sore, being patient with yourself and your knee and gently working on getting it moving will all contribute to helping your operation become success.

Pain control: Some people will choose to manage their pain with pain relief, whilst some may choose to avoid medication. Applying something warm/cold around your knee may also be useful in helping with some of the pain (do remember to wrap your hot water bottle/cold pack in a towel before applying it to your skin to avoid burns).

Get your knee moving: Moving you and your knee as much as is comfortable is essential for getting a good result from your operation. The sooner you can start exercising, taking some weight and walking on your new knee, the quicker you will likely progress.

Is there anything I shouldn't do with my knee? Unless you have been specifically told by the hospital to avoid certain things, there are no things that you need to avoid after having a knee replacement.

Will it get better?

For most people, a knee surgery may not be a pleasant experience but reassuringly, it does have the potential to get better. By understanding the issue as best you can and by adjusting what is sore to then allow you to explore some exercise/s, is often the best formula for success.

If you would like to know more about knee replacements or find a greater choice of exercises, you can explore our dedicated webpage.

Search online: [Norfolk and Waveney MSK services](#) 'partial knee replacement'

Exercises



On the bed. Slide your heel towards your bottom and away again.
Complete little and often throughout the day.



Place a chair in front of you with a cushion or rolled up towel on it. Put your heel on the cushion/towel and allow your knee to relax.
Complete little and often throughout the day.



If you would like this leaflet in large print, audio, Braille or in a different language, please contact us on **01502 445447**.

Jei šios publikacijos kopija noretumete gauti savo kalba prašome susisiekti su telefono numeriu: **01502 445447**.

Jezeli chcieliby Panstwo otrzymac niniejsza publikacje w tlumaczeniu na jezyk polski, prosimy o kontakt z pod numerem telefonu: **01502 445447**.

Pokud byste chteli kopi této publikace ve Vašem jazyce, prosím kontaktujte ovou na telefonním čísle **01502 445447**.

Bu yayinin kendi dilinizde bir nüshasını isterseniz, lütfen **01502 445447** nolu telefondan ile temasa geçiniz.

Se pretender uma cópia desta publicação no seu idioma, por favor contacte no número **01502 445447**.